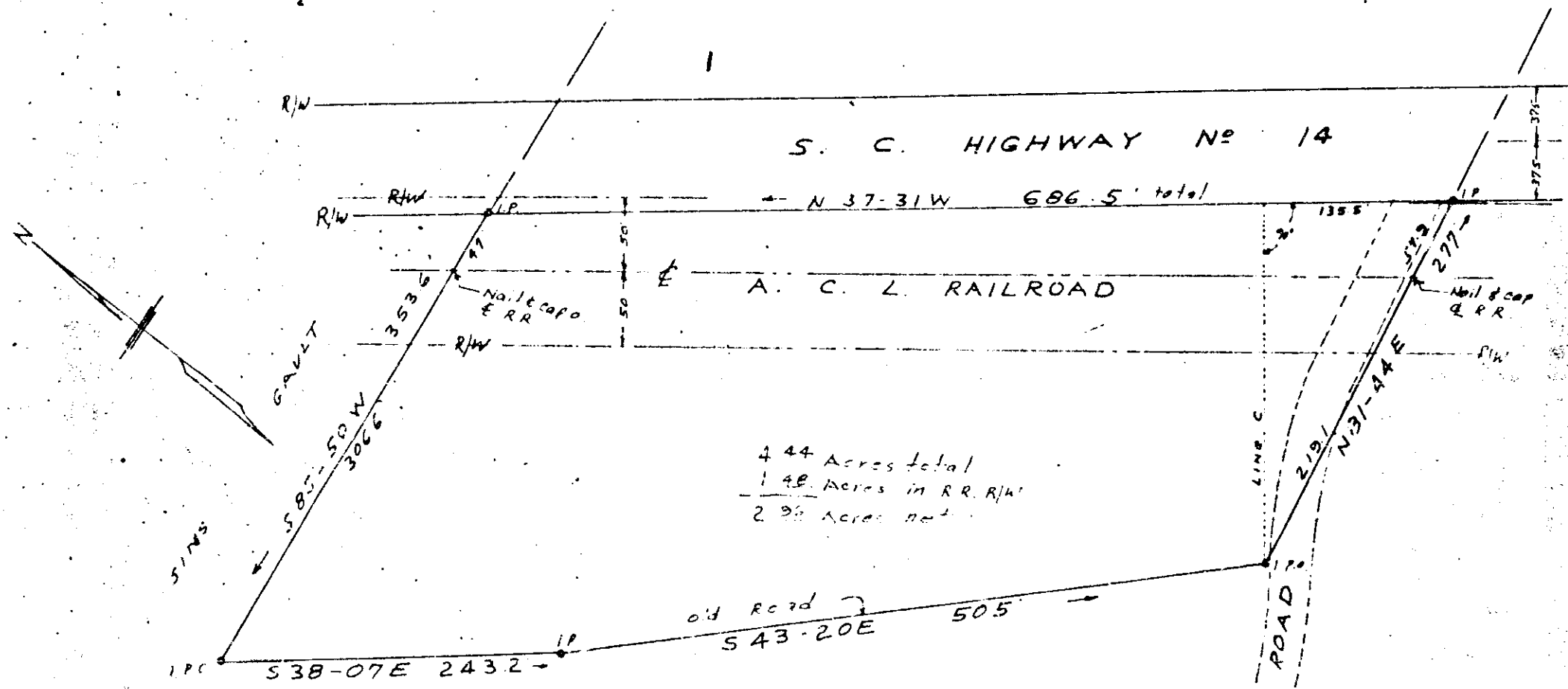


# Plat Book WW, Page 165

OCT 3 2 44 PM 1961

YOUNTS & SPENCE



4.44 Acres total  
 1.48 Acres in R.R. R/W  
 2.96 Acres net

PROPERTY OF  
 MAULDIN - SIMPSONVILLE - FT. INN WATER WORKS

NEAR SIMPSONVILLE S. C.

SCALE 1"=100'

SEPT. 11, 1961

Part of Plat of Mrs. Etha S. Green, Deft.  
 by Lewis C. Foddy, LS June 1952

OCT 3 - 1961

8005

WW-1655

C. O. Riddle - Reg. L.S.

P. O. D-61  
 100  
 Photo

Recorded October 3, 1961 at 2:44 P. M. #8665